

GRANITE POINT SUBDIVISION

SECTION 10, T2S, R6E, BHM

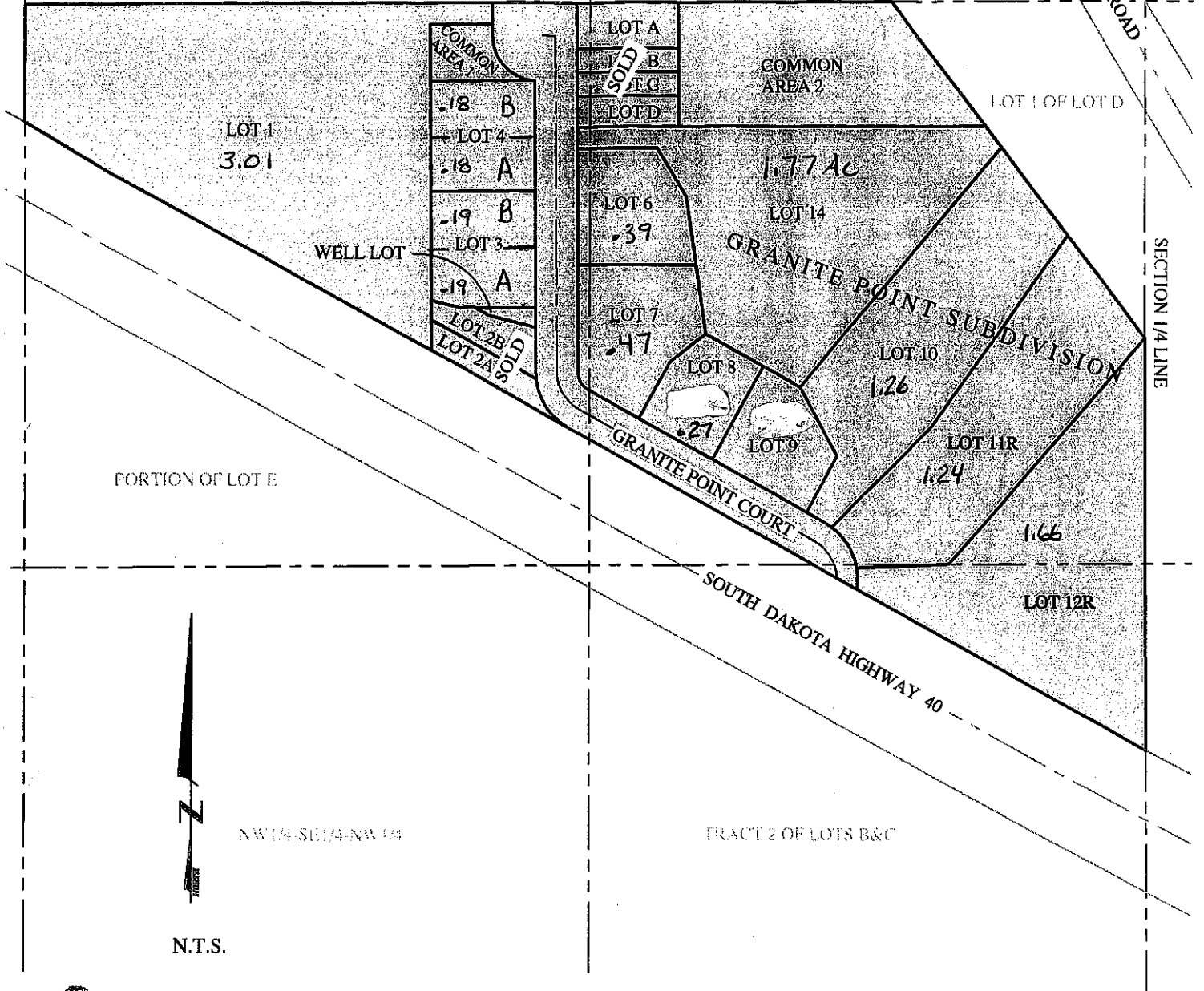
KEYSTONE, PENNINGTON COUNTY, SOUTH DAKOTA

SECTION 17 1/2 LINE

NW 1/4-NE 1/4-NW 1/4

NE 1/4-NE 1/4-NW 1/4

S. ROCKERVILLE ROAD



SECTION 1/4 LINE

PORTION OF LOT E



N.T.S.

NW 1/4-SE 1/4-NW 1/4

TRACT 2 OF LOTS B&C



CITY HALL 1903

Renner & Associates, LLC.

616 Sixth St. * Rapid City, SD 57701 * 605/721-7310
FAX: 605/721-7313 * E-MAIL: Gary@RennerAssoc.com
Spearfish Office * 605/717-0016